



REVELSTOKE MOUNTAIN LIVING



TABLE OF CONTENTS

04	HISTORIC REVELSTOKE	36	THE NEXT CHAPTER
10	REVELSTOKE TODAY	44	REVELSTOKE MOUNTAIN CLUB
12	LIFESTYLE	46	CABOT REVELSTOKE
16	NORTHLAND PROPERTIES	50	REAL ESTATE OPPORTUNITIES
18	REVELSTOKE MOUNTAIN RESORT		

PHOTO CREDITS

Hywel Williams | Tom Poole | Laura Szanto | Ryan Creary | Revelstoke Museum & Archives | Liam Packwood | Ian Houghton | Royce Sihlis | Bruno Long | Daniel Stewart | Chad Chomlack | Whitney Whitehouse | Mitch Cheek

WESTERN CANADA

Few places on the planet possess more awe-inspiring natural beauty than Western Canada’s Selkirk and Monashee Mountains. Located in southeastern British Columbia, these majestic summits guard secrets as old as Earth itself. This area is an unblemished realm of splendor, where astounding peaks rise above verdant forests, crystal-clear lakes and the mighty Columbia River.

This extraordinary sanctuary within the world’s only inland temperate rainforest boasts a remarkable diversity of flora and fauna that has long been revered by the Sinixt, Secwépemc, Ktunaxa and Syilx Nations for its profound natural beauty and spiritual significance.

Today, the historic city of Revelstoke and Revelstoke Mountain Resort (RMR) sit nestled in this magnificent valley. Residents and visitors alike are committed to preserving the area’s unique charm while maintaining a recreational lifestyle.





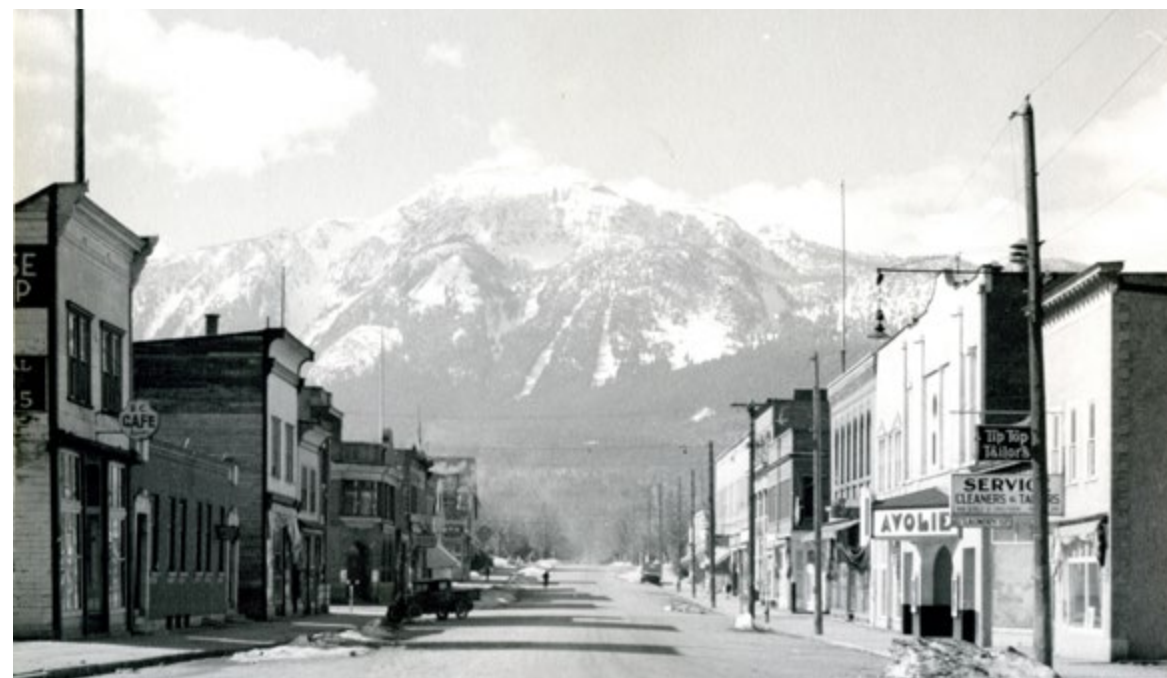
HISTORIC REVELSTOKE

Revelstoke and the surrounding lands bear the timeless imprint of those who have cherished and nurtured it for millennia. The Sinixt, alongside the Secwépemc, Ktunaxa and Syilx First Nations, have lived and travelled the valley and along the salmon-rich rivers, honoring the delicate balance of the area's rich ecosystem.

ORIGINS



In the 1860's, a gold rush along the Columbia River north of (what is now called) Revelstoke began drawing adventurers and fortune seekers alike. In 1885, the construction of the Canadian Pacific Railway (CPR) sparked the growth of Revelstoke into what it is today.



As the railway tracks stretched across the vast Canadian landscape, Revelstoke emerged as one of the most prominent communities in the province's interior, owing much of its growth to its vital role as a railway centre. The town thrived as steamboat traffic along the Columbia River seamlessly connected with the CPR and the burgeoning mining and forestry industries further bolstered its importance as a trade centre.

ORIGINS

Originally named Farwell in honor of the surveyor A.S. Farwell, the town was rechristened Revelstoke in 1899 to pay tribute to Lord Revelstoke for his role in securing the financing necessary to complete the CPR. Widely regarded as one of Canada's most emblematic events, the hammering of the Last Spike just west of Revelstoke at Craigellachie marked the completion of the railway and the joining of the two ends of the country.

Revelstoke Mountain Resort's Last Spike ski trail which runs from the top of RMR to the base of the mountain is named in honor of this significant event.

Revelstoke's storied history with skiing dates back to 1890 and continues with the establishment of North America's first ski jump in 1915. The influx of Scandinavian settlers led to the formation of the Revelstoke Ski Club and the inauguration of the first Winter Sports Carnival, an event that evolved into the international Tournament of Champions. Men and women alike took to the hill for this special event.



Local ski legend Nels Nelsen dominated the scene from 1916 to the 1930s, setting a world record in 1925 with a jump of 250 feet. A few years later, 15-year-old Isabel Patricia Coursier became the women’s world champion ski-jumper with her 84-foot historic jump.

Her bronze statue stands proudly near the entrance of Revelstoke City Hall today. Their legacies remain a testament to the rich skiing heritage that continues to define Revelstoke as a premier destination for sports enthusiasts.





REVELSTOKE TODAY

Revelstoke stands as a genuine mountain town surrounded by several defining mountains – Mount Mackenzie, Mount Revelstoke, Mount MacPherson, Mount Begbie and Mount Cartier – and is rooted in preserved history.



The city exudes an independent and industrious spirit, reflecting a rich heritage that continues to inspire, offering a wealth of activities all year round.

Revelstoke retains many of its original 20th-century commercial buildings and homes, bestowing a charming downtown with a nostalgic railway vibe. This historical charm is seamlessly intertwined with modern-day vibrancy, making Revelstoke inimitable and inviting. As a gateway to national parks, Revelstoke invites exploration and adventure, and offers a harmonious blend of natural beauty, cultural richness, and community warmth.

Revelstoke is home to highly active and adventurous locals and visitors who embrace its railway roots and vibrant ski culture. The locale is eclectic with its residents possessing a deep appreciation for the arts and exhibiting a tight-knit community where people genuinely know and care for one another.





LIFESTYLE

Living in Revelstoke means being part of a community that values connection, creativity, and outdoor adventure all year round, blending small-town charm with big-mountain energy.



Revelstoke offers the chance to put down roots in a vibrant, all-season, recreation-centric mountain town. Here, the entire community comes together to cheer on the city's amazing Revelstoke Grizzlies junior hockey team and where people of all ages are encouraged to participate in the vast array of clubs, camps, and classes that the city of Revelstoke offers each season. With an outgoing, good-natured culture that celebrates both small victories and major accomplishments, Revelstoke provides opportunities for all demographics to get involved.

Summertime in town is just as vibrant as the other seasons, with a farmers market every Saturday and live music every night. The city boasts specialty retailers, a dynamic restaurant and bar scene, and a rich array of art galleries and cultural experiences.

Community-wide events are a hallmark of Revelstoke life. Residents and visitors alike can enjoy Luna Fest, an enchanting festival of light and art that transforms the city into a magical wonderland. The Revelstoke Farm & Craft Market offers fresh local produce and handmade goods, while the Revelstoke Garlic Festival celebrates the versatility and flavor of this beloved ingredient. For those who love cycling, the Revelstoke Bikefest is a must-attend event that celebrates the city's biking culture with events and competitions. Winter ramps up the city's spirits even further. The Revelstoke Winter Carnival is a highlight, featuring a range of activities and entertainment that visitors and residents can enjoy.





NORTHLAND PROPERTIES

Northland Properties is redefining Revelstoke Mountain Resort, bringing together world-class hospitality, thoughtfully designed real estate, and immersive mountain experiences. Guided by a vision of excellence, Northland aims to create a year-round destination that celebrates the natural beauty of Revelstoke, contributes to a vibrant mountain community, and offers extraordinary experiences.



Northland Properties began in 1967 with the opening of the first 35-unit Sandman Inn in Smithers, BC, and has since grown into a globally recognized leader in hospitality and real estate. In 2007–2008, Northland acquired Revelstoke Mountain Resort and Selkirk Tangiers Heli Skiing, laying the foundation for a world-class, year-round alpine destination. In 2018, the RMR master plan was revisited, marking a shift in leadership and the start of a thoughtful, long-term approach to developing the resort. Guided by this renewed vision, Northland is carefully shaping luxury accommodations, amenities, and real estate opportunities to enhance Revelstoke’s character while delivering extraordinary experiences for residents and guests alike.



REVELSTOKE MOUNTAIN RESORT

RMR opened in 2007 and epitomizes the pinnacle of big mountain skiing adventure. Renowned for its legendary snow quality and expansive big mountain terrain, the resort caters to skiers and snowboarders of all skill levels. With several family-friendly learning zones, RMR has become a prime family destination.



GETTING HERE

Revelstoke is easily accessed through Kelowna International Airport (YLW), with direct flights from Vancouver, Victoria, Calgary, Edmonton, Toronto, Montreal, and several U.S. cities, including Seattle, Los Angeles, Las Vegas, and Phoenix. From Kelowna, it's a stunning 2.5-hour drive to Revelstoke's breathtaking mountain landscapes. This ease of access makes Revelstoke a top choice for adventurers near and far. A brand new Sutton Place Hotel has broken ground at the Kelowna Airport, giving guests the opportunity for a seamless transition to Revelstoke.

Revelstoke Airport is located only three minutes west of the base of RMR and eight minutes south of downtown Revelstoke, and caters to private charters.



4
ALPINE BOWLS

75
NAMED RUNS

573,000
ANNUAL VISITATION

3,121 ACRES
OF TERRAIN

10.5 M / 35 FT
AVG SNOWFALL

1,713 M / 5,620 FT
VERTICAL DROP



Revelstoke Mountain Resort is a winter paradise for adventure seekers, offering unparalleled skiing and snowboarding experiences. With the most vertical in North America—at 1,713 metres (5,620 feet)—RMR boasts an expansive terrain that caters to all skill levels. From wide-open bowls and glades to world class groomers, the resort offers something for everyone.

In addition to downhill skiing and snowboarding, Revelstoke offers a range of other winter activities that make it a true adventure hub. Often called the heli-skiing capital of the world, Revelstoke provides unparalleled access to untouched powder and breathtaking alpine terrain, making it a bucket-list experience. Snowmobiling also remains a popular choice, with extensive trails and backcountry zones through beautiful mountain vistas. For those seeking a quieter connection to nature, Revelstoke offers excellent Nordic skiing on well-groomed trails and scenic snowshoeing routes, inviting guests to immerse themselves in the serene beauty of snow-covered forests at a gentler pace.



NATURAL SELECTION TOUR

Natural Selection chose RMR as a vital stop on its annual tour in a quest to crown the best all-around snowboarders navigating the planet's most dynamic terrain.

The Natural Selection Tour features 24 top snowboarders competing in events across three different continents including in Revelstoke. The Revelstoke leg of the competition underscores the shared mission of the Natural Selection Tour and RMR – that is, to inspire a deeper connection with Mother Nature. Throughout the competition RMR serves as a living hub for competitors and spectators offering music, entertainment, and training programs that attract many visitors from far and wide.



SELKIRK TANGIERS HELI SKIING

RMR is also partnered with Selkirk Tangiers Heli Skiing – the penultimate for those seeking the thrill of a heli skiing experience in the Selkirk and Monashee Mountains. With access to half a million acres of terrain and more than 400 established runs of untouched powder, Selkirk Tangiers offer a variety of terrain options from wide-open glaciers to rolling meadows and old-growth forests. Selkirk Tangiers Heli Skiing will be based out of the new Karl Hotel on the resort as well as operate out of Mars Creek – a private wilderness lake property offering a lodge and outdoor adventures.



SPRING

As the snow melts and the valley awakens, spring in Revelstoke is a season of contrast. Guests can still enjoy world-class skiing well into April before shifting to biking, hiking, or scenic walks as trails begin to thaw.

Rivers swell with spring melt, creating excitement for whitewater rafting and kayaking, while lakes and streams invite early paddleboarding and fishing. Downtown, the Revelstoke farmers' market kicks off the season, filling the streets with fresh local produce, handmade goods, and community spirit.

With snow-capped peaks above and blooming valleys below, spring at Revelstoke Mountain Resort offers the best of both worlds—winter's final turns and the first signs of summer adventure.



SUMMER

In the summer, RMR continues to be a haven of outdoor activities and social events. Families can enjoy the Pipe Mountain Coaster, the Aerial Adventure Park, the suspension bridge, and the Woodchuck Disc Golf Course. Hiking and mountain biking for all levels are a wonderful way for families and friends to connect and enjoy the spectacular mountains and endless crisp blue skies. Thrill-seeking, mountain bike enthusiasts can tackle the famed Fifty-Six Twenty, said to be the longest flow trail ever built and spanning the mountain’s full vertical drop of 5,620 feet. Revelstoke also boasts spectacular rock climbing and alpinist adventures, as well as incredible gravel and road cycling routes. A multi-use path connects the resort to downtown for added convenience and adventure.

Extensive watersports on nearby lakes and rivers further enhance the summer experience. Lake Revelstoke and the hundreds of nearby rivers, creeks and streams provide the opportunity for countless hours of swimming, boating, paddleboarding, and fishing.

With its year-round breathtaking natural beauty and diverse range of activities, RMR invites families and trailblazers alike to embrace a lifestyle of adventure and hustle or tranquility and solitude.





In the fall, Revelstoke slows into a season of colour and calm. The mountainsides glow with golden larches and fiery maples, creating a breathtaking backdrop for hiking, biking, and scenic drives. Crisp days and cool evenings make it an ideal time for long rides on gravel or road, peaceful hikes, or simply soaking in the shifting light over the Columbia River.

Paddling, fishing, and trail exploration continue in the valley, offering a quieter, more reflective pace before winter's return.

With its vibrant landscapes and sense of transition, fall in Revelstoke is a time to savour the outdoors and the community spirit that thrives here year-round.

THE SUTTON PLACE HOTEL

Constructed in 2009, The Sutton Place offers premier accommodation located at the base of RMR. Offering over 200 well-appointed condominium suites, the hotel provides a variety of options to suit different needs, ranging from cozy studios to spacious three-bedroom suites which are ideal for families or larger groups. Not only does the hotel feature noteworthy amenities such as three outdoor hot tubs, a heated pool, and a fully equipped fitness centre, but it is also the only ski-in, ski-out hotel in Revelstoke making it the perfect choice for mountain enthusiasts. The Sutton Place offers a blend of comfort, luxury, and convenience in the heart of Revelstoke’s breathtaking alpine setting.

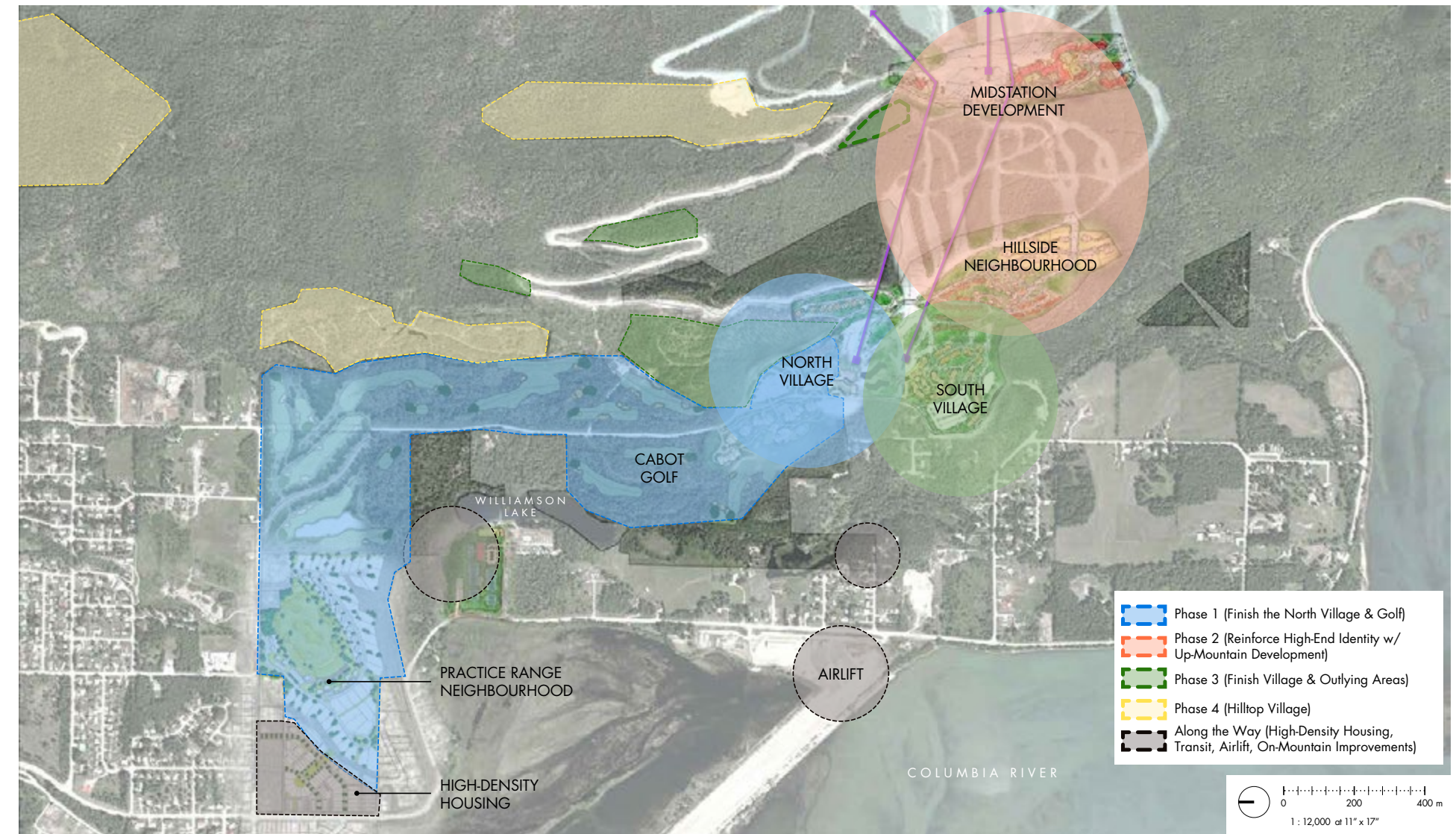




THE NEXT CHAPTER

Revelstoke Mountain Resort is on track to become a world-class, all-season destination. Combining contemporary luxury with the resort's authentic mountain heritage, it offers a vibrant and inviting place to live, play, and explore.

CONCEPT MASTER PLAN



SUSPENSION BRIDGE

As of summer 2025, the suspension bridge and viewing platform was introduced just off the top of the Revelation Gondola. The suspension bridge overlooks the valley and the city of Revelstoke below and provide “easy-access Instagram moments” with spectacular views of Mt. Begbie. The platform suspends over thin air, and offers a breathtaking perspective. This is a must-visit attraction for both locals and tourists seeking unforgettable scenic encounters.

RMR also continues to expand its mountain bike park, adding new trails to cater to all skill levels. With these additions, Revelstoke will solidify its status as a premier year-round adventure destination.



THE KARL HOTEL



The Karl, a four-star slope-side hotel, is named in honor of Karl Schlunegger, the grandfather of the founder of Selkirk Tangiers Heli Skiing. This elegant property will feature a Chop-branded steakhouse, a full fitness facility, wellness services, and more than 6,000 square feet of conference and ballroom space. The Karl will also become the new home of Selkirk Tangiers Heli Skiing, complete with an adjacent helipad.

Complementing this, Revelstoke Mountain Resort will introduce a diverse and sophisticated culinary scene. Guests can look forward to a lively lobby bar, craft coffee, a bakery venue, and a specialty dining concept featuring sushi, ramen, and other refined cuisines.

*This is not an offering for sale. Error and omissions are expected, and images are conceptual and subject to change.

FULL SERVICE VILLAGE

The North Village at Revelstoke Mountain Resort is set to become a lively hub for adventure seekers and leisure lovers. Alongside a cozy café for quick coffee stops or leisurely breakfasts, the village will feature expanded shopping options for groceries, gear, and other essentials. New amenities, including expanded locker facilities, will provide secure, convenient access to equipment, while an upgraded Mountain Sports School will cater to all skill levels. With a full range of dining options and additional services being added to create a complete, full-service village, the North Village will be a welcoming, lively basecamp for your Revelstoke adventures, day and night.

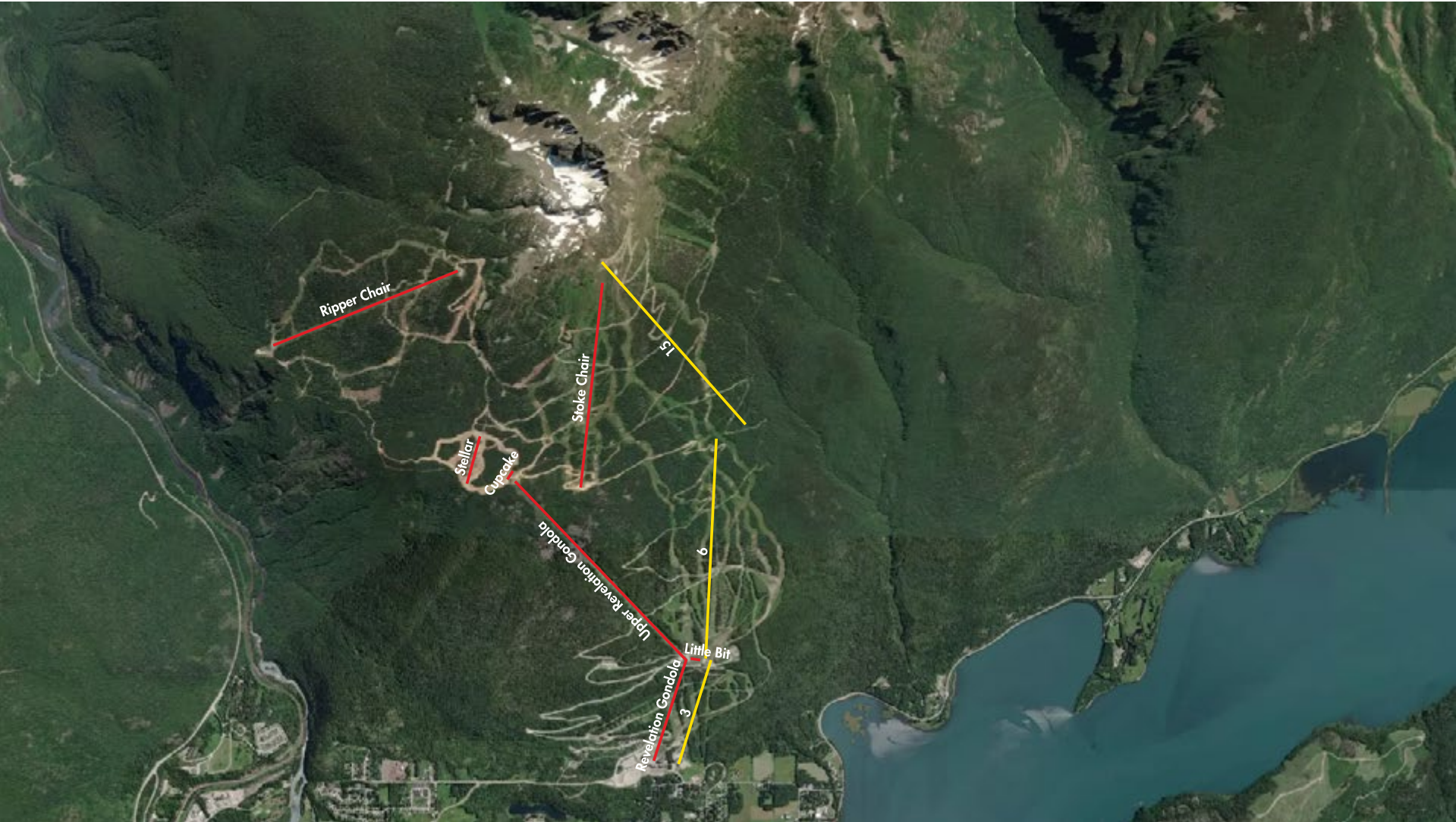


MOUNTAIN ENHANCEMENTS

Revelstoke Mountain Resort continues to invest in thoughtful on-mountain enhancements designed to elevate the guest experience. A new summit building at the top of the gondola will create a striking arrival point and gathering space, while an expanded Revelation Lodge outdoor deck will offer more room to relax and take in the views. A new on-mountain market will bring added convenience, and planned upgrades to lifts and snowmaking will ensure smoother access and more reliable conditions throughout the season. Together, these projects reflect a commitment to innovation, quality, and delivering an unparalleled mountain experience.



*This is not an offering for sale. Error and omissions are expected, and images are conceptual and subject to change.



Legend

- Ex Ph 1
- Prop Ph 2



The vision for the resort includes the creation of a Strom Nordic Spa in the hillside neighborhood—just a five-minute drive from the resort yet designed to feel worlds away in complete serenity. The spa is envisioned as a sanctuary of thermal experiences that nourish and transform the body, promoting inner balance and harmony.

Nestled within a secluded mountain environment, the Strom Nordic Spa will offer an unparalleled retreat from the everyday. Guests will enjoy a range of thermal treatments, including heat, cold, and relaxation therapies, all set against the backdrop of Revelstoke’s majestic landscape.



REVELSTOKE MOUNTAIN CLUB

The exclusive Revelstoke Mountain Club offers a truly elevated, all-season mountain experience in the heart of RMR and its surrounding areas. Members will enjoy luxury, convenience, and unparalleled services and amenities, including the ultimate ski-in/ski-out access—all from the comfort of the North Village private clubhouse.



The Revelstoke Mountain Club lounge will be designed for comfort and service. Geared towards families, hardcore enthusiasts, and everyone in between, the facility will offer ski lockers, ski valet, priority concierge booking for activities, rentals, dining, wellness facilities, and a kids zone. A private elevator will transport club members from the parking area directly to the lounge above, creating a seamless sense of ease and convenience.

In summer, members also enjoy access to Mars Creek, a 150-acre wilderness lodge on the shores of Lake Revelstoke. This private retreat provides effortless lake access and a range of amenities, including swimming, kayaking, fishing, paddleboarding, a sauna, and a hot tub—offering the perfect balance of adventure and relaxation. Membership is limited to 350, with priority consideration given to current and new RMR real estate owners.



CABOT REVELSTOKE

Cabot Revelstoke will boast an 18-hole golf course masterfully designed by the celebrated Rod Whitman. The golf course will deliver an unparalleled golfing experience that harmoniously blends challenge and beauty, emphasizes sustainability and environmental stewardship, and aligns perfectly with RMR's vision.

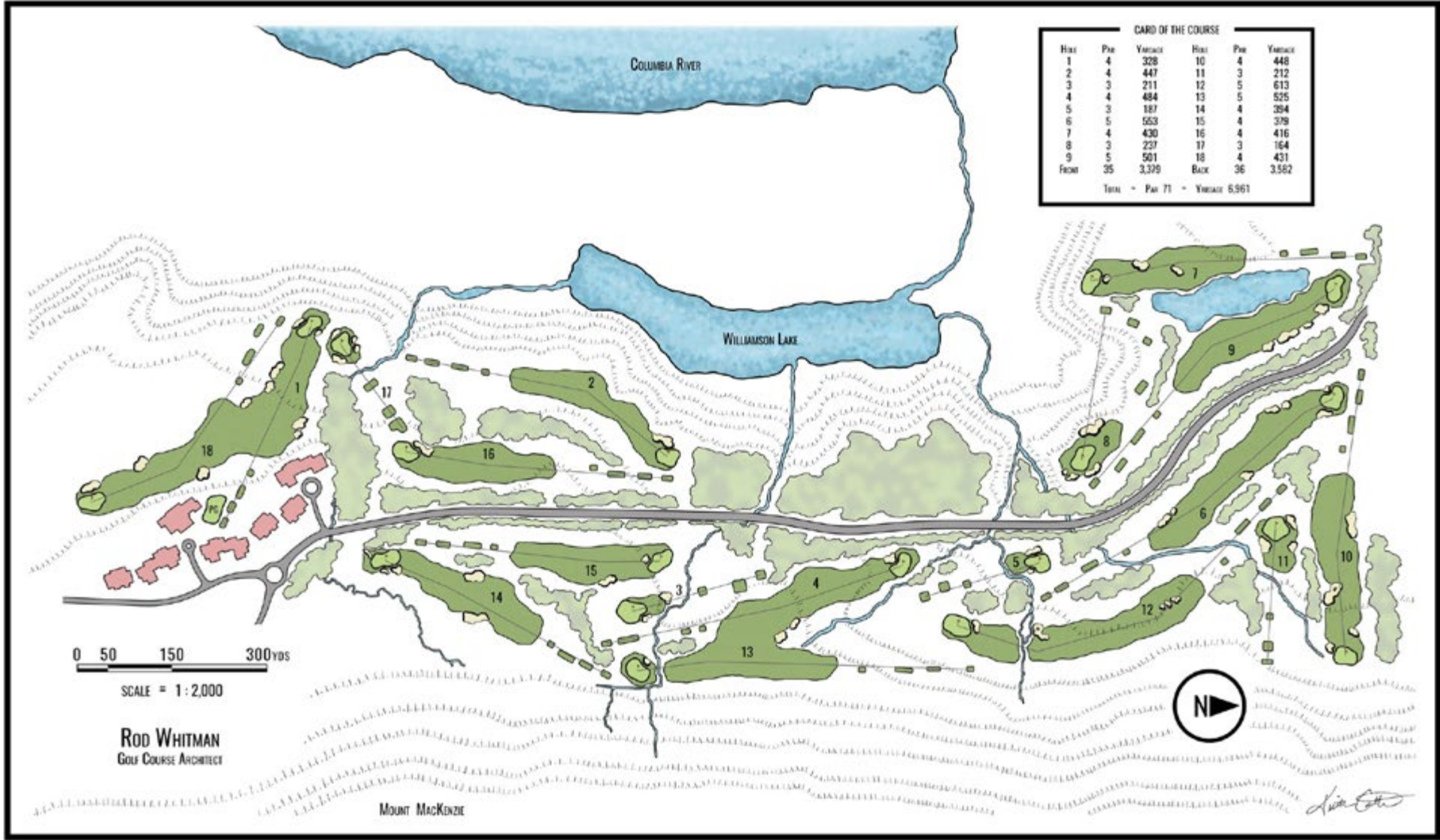


Golfers will be guided through a breathtaking landscape marked by natural contours, dramatic cliffs, culverts, and rugged rocky outcroppings, all set against the backdrop of towering mountain vistas visible from every hole.

Cabot Revelstoke will be integrated into a grand village expansion complete with residences and a host of amenities including a private helipad. Cabot currently has four top-100 courses around the world, with Cabot Revelstoke expected to join the ranks. The golf course will be located on a flat benchland with only 100 feet of elevation change which is most uncommon for a mountain course.



*This is not an offering for sale. Error and omissions are expected, and images are conceptual and subject to change.



THIS SETTING RIVALS THE BEST IN CANADA — AND THE WORLD. OUR GOAL IS TO CREATE INSPIRING GOLF THAT WILL BRING PEOPLE TOGETHER AND STAND THE TEST OF TIME.

– Rod Whitman, Golf Course Architect



REAL ESTATE OPPORTUNITIES

Discover exceptional investment opportunities at RMR, where mountain living meets modern luxury. Our diverse real estate offerings include everything from private estates to premium condominiums, each designed to capture the beauty of the surrounding landscape. Conceptual, illustrative renderings subject to change.



These materials do not constitute an offer or solicitation of any kind, nor are they intended to be distributed in or constitute an offer to sell real estate or real estate securities to residents of any jurisdiction where prior registration, license, or advance qualification is required but not yet completed. Revelstoke Mountain Resort reserves the right to make changes, corrections, cancellations, and/or improvements to the content of these materials, and the products, services, and programs described herein at any time without notice, including after confirmation of a transaction. The images are subject to change as the design process evolves, as the drawings are conceptual in nature. All dimensions are approximate. All depictions of furniture, appliances, counters, soffits, floor coverings, and other matters of detail and/or specification, including, without limitation, items of finish and decoration, are representations only and are not necessarily items that are included in each unit.

MOUNTAIN ROAD ESTATES

Mountain Road Estates is a neighborhood of estate lots and villas part-way up Mount Mackenzie, located between the current Mackenzie Landing neighborhood and the Monashee Estates neighborhood. The project broke ground in summer 2025, marking the start of an exciting new chapter in on-mountain living. Each unit spans approximately 3,500 square feet and offers stunning views of Mount Begbie. Similar to owners of other resort-lands, Mountain Road Estates owners will have priority consideration for membership into the Revelstoke Mountain Club, an exclusive opportunity that provides an elevated resort experience with enhanced amenities and activities.





BENCHLANDS RESIDENCES

This future residential neighborhood, located east of Arrowhead Crossing along Nichol Road, will feature a mix of townhomes, condos, and estate lots bordering the practice area of Cabot Revelstoke's golf course. Construction of the townhomes began in summer 2025. The easternmost estate lots, overlooking the 7th hole, will offer some of the most spectacular views in the community. Each home and estate lot is designed to provide an exceptional, elegant, and luxurious living experience. The architectural style complements the natural beauty of the surroundings, blending modern mountain design with traditional touches to create a cohesive and harmonious neighborhood.

Owners at Benchlands Residences will have the opportunity to join a rental management program and reap the benefits of a professionally managed short-term rental program.

In addition, owners of real estate in the Benchlands Residences have priority consideration for membership into the Revelstoke Club, an exclusive opportunity with immeasurable advantages.



*This is not an offering for sale. Error and omissions are expected, and images are conceptual and subject to change.

RAVEN TOWNHOMES

Located in the Farwell neighbourhood in downtown Revelstoke, the Raven Townhomes are a sophisticated collection of 31 three-bedroom, three-bath townhomes. The architecture reflects the vibrant and historic character of Revelstoke, thoughtfully designed with mountain living in mind while providing modern comforts and conveniences. While residents have the choice between two design packages – a darker Terra Style and a lighter Alpine Style – all design elements include contemporary finishes with nods to the city’s railway heritage, creating a blend of old-world charm and new-world luxury. Each unit offers a private balcony, a heated garage, and top of the line features including stainless steel appliances, Moen bathroom fixtures, and quartz countertops.

The Raven Townhomes are perfect for young families and singles wanting to step into the real estate market or for investors looking to have an investment property in a blossoming destination resort town. These townhomes offer an ideal urban living experience with easy access to the city’s dynamic restaurant and bar scene, specialty retailers, and cultural events, and are located a 10-minute drive to the resort.



Revelstoke Mountain Resort is becoming a world renown, charming destination resort nestled in the awe-inspiring Selkirk and Monashee Mountains. Designed as a place for families to connect and hard-core enthusiasts to push their limits, RMR is a year-round playground for all. Building on their legacy, Northland Properties is committed to creating, growing and maintaining a world-class resort for all seasons.

RMR real estate owners will play a crucial role in preserving Revelstoke. For many, this will be more than just a vacation spot, it will be a year-round home, fostering a vibrant community dedicated to sustaining a place they cherish.



WE'RE IN IT FOR THE LONG HAUL.

– Tom Gaglardi, CEO, Northland Properties



YOUR MOUNTAIN HAVEN

