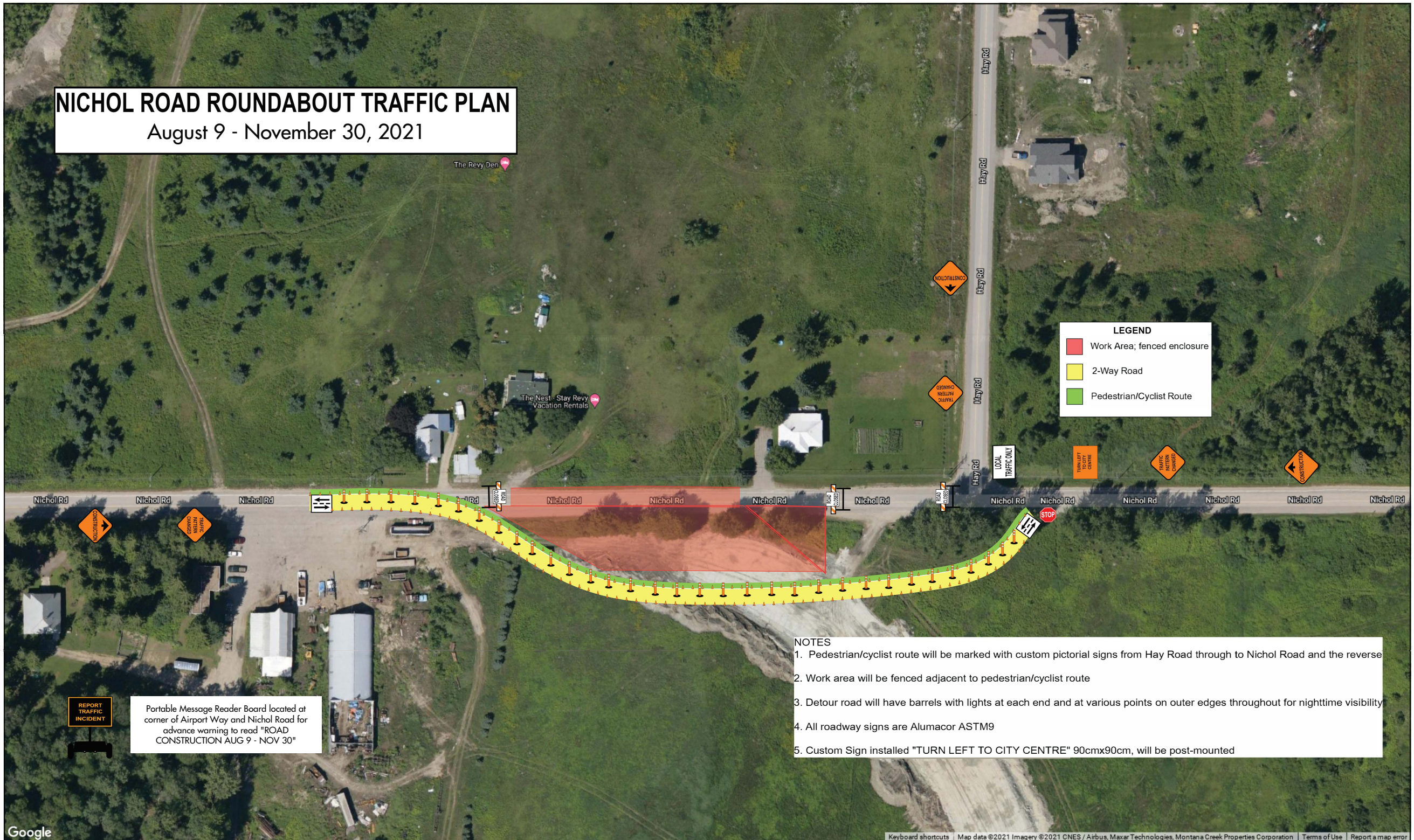


NICHOL ROAD ROUNDABOUT TRAFFIC PLAN

August 9 - November 30, 2021



LEGEND

- Work Area; fenced enclosure
- 2-Way Road
- Pedestrian/Cyclist Route

- NOTES**
1. Pedestrian/cyclist route will be marked with custom pictorial signs from Hay Road through to Nichol Road and the reverse
 2. Work area will be fenced adjacent to pedestrian/cyclist route
 3. Detour road will have barrels with lights at each end and at various points on outer edges throughout for nighttime visibility
 4. All roadway signs are Alumacor ASTM9
 5. Custom Sign installed "TURN LEFT TO CITY CENTRE" 90cmx90cm, will be post-mounted

Portable Message Reader Board located at corner of Airport Way and Nichol Road for advance warning to read "ROAD CONSTRUCTION AUG 9 - NOV 30"

REPORT TRAFFIC INCIDENT